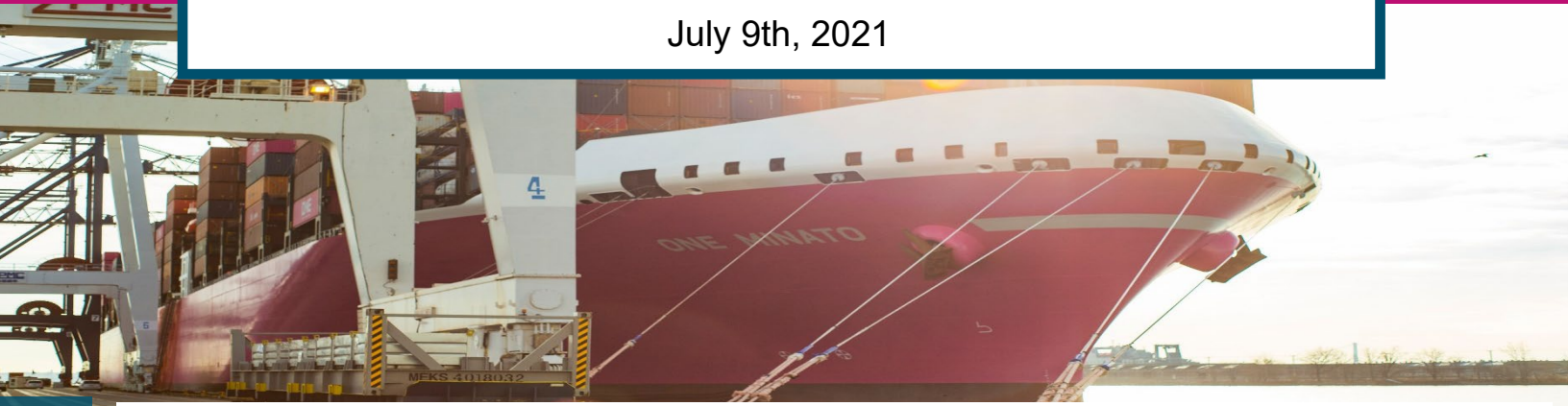


ONE View – North America Customer Newsletter

July 9th, 2021



General Overview

Equipment Alert: Historic volumes and increased dwell times on the street have stretched available capacity everywhere. Please expedite your pickup and return of containers to help ensure cargo fluidity. Also, peak season is almost upon us and we're expecting volumes to increase later this month, which is why it's imperative not to hold on to your equipment (chassis). A wildfire affected the CPR and CNR rail lines near Vancouver (details below under terminal conditions). The rail dwell has increased for Los Angeles and Long Beach ports for import destined cargo to the small Hub inland locations. This week are the most affected by the Chassis Pool being tight are Seattle, Denver, Houston, Minneapolis, Chicago, Joliet, Memphis and Charleston. For details, you can scroll to the bottom to "ONE North America's Resources" and click the links.

Terminal Conditions for USA/CANADA

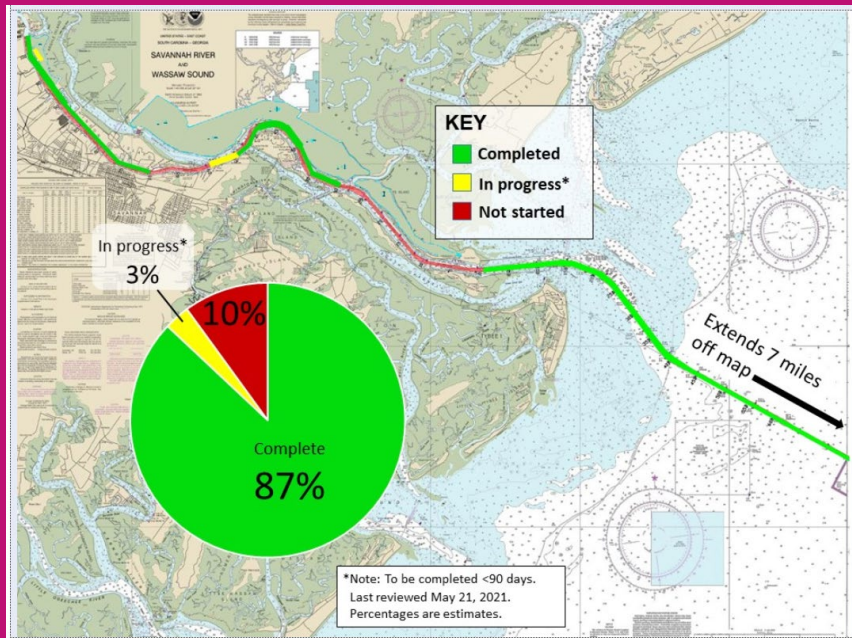
- **Pacific North West** – The Lytton City (BC) near Vancouver had experienced wildfires which had affected the CPR and CNR rail lines. Only the CPR rail line remains open, but very congested (only two trains eastbound and westbound daily). We expect CNR rail line to be repaired and open in 10 days or more. All terminals in the Vancouver region were affected (Deltaport, Vanterm, Centerm & FSD), causing vessels to be delayed waiting to discharge and load rail cargo. CNR is routing empties to Prince Rupert since it's not affected. Current average dwell time as follows: WUT **11 days** rail dwell time average. Husky Terminal, **8 days** rail dwell average. Seattle T18, **27 days** rail dwell average. Majority of ONE's decked rail imports are at WUT terminal.
- **Port of Oakland** – OCIT and Trapac both terminals averaging **4 days** rail dwell time. However, there are 20 ships waiting to berth, which is forcing terminals carefully meter the discharge of imports.
- **Port of Los Angeles/Long Beach** – This week vessels waiting at LA/LB have increased to 22. All terminals are averaging from **14 to 23 days** of rail dwell. Majority of our decked units are at YTI and ITS terminals. More information regarding rail dwells is listed below under Rail Ops.
- **East Coast** – The main difficulties facing the terminals are: GCT-BAYONNE (New Jersey) **rail dwell of 7 days**, GCT (New York) **rail dwell of 9 days**, GPA (Savannah) dredging project 7 vessels to waiting for berth, NIT/VIG (Norfolk) rail dwell of 4 days, and Houston facing biggest problems with **rail dwell of 18 days**, labor shortage (crane operators), tight on chassis caused by huge volumes.

Anchor and Berth at Select Ports

Port Location	Total Vessels (all Lines)	Days Waiting
Los Angeles/Long Beach, CA	22	0-2 days
Oakland, CA	20	8-20 days
Seattle/Tacoma, WA	5	3-6 days
Vancouver, BC (Canada)	5	0-4 days
Savannah, GA	7	0-2 days

Port of Savannah Dredging

Dredging project temporarily slows vessel activity at Port of Savannah, harbor deepening moves to berth areas, adding to wait time. Dredging project is expected to be completed by next week.



RAIL NETWORK in G3 & G4 Chicago, IL (No changes)

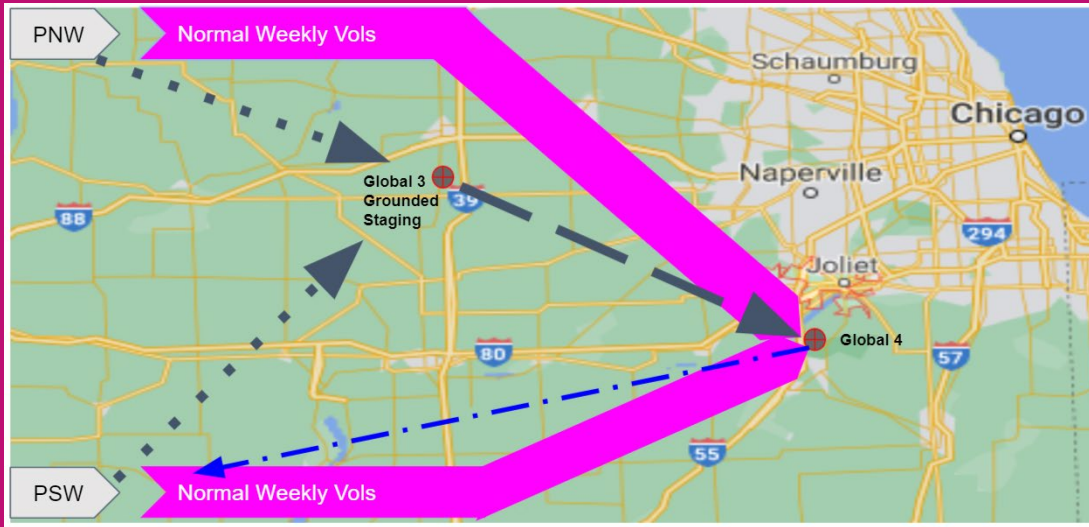
As mentioned, two weeks ago of ONE's plan to rail 40' import containers from Tacoma and Long Beach to G3 (to be decked) and later shuttled to G4 for containers to be picked up on wheels. Here is an update of our progress made so far:

- Since the start of this operation, we've had a reduction of 31% decked imports at G4.
- The number of decked units at G4 is slowly reducing.
- Our Ops Teams is working closely with G4 to focus on most aging units decked.

Average Rail Transit Times (1st half of June 2021)

From Los Angeles/Long Beach	From Seattle/Tacoma/Vancouver
Atlanta, GA – 17 Days	Atlanta, GA – 18 Days
Chicago, IL – 15 Days	Chicago, IL – 21 Days
Cleveland, OH – 19 Days	Cleveland, OH – 16 Days
Columbus, OH – 19 Days	Columbus, OH – 16 Days
Dallas, TX – 15 Days	Detroit, MI – 12 Days
Detroit, MI – 19 Days	Kansas City, KS – 12 Days
Houston, TX – 17 Days	St. Louis, MO – 15 Days
Kansas City, KS – 16 Days	Memphis, TN – 13 Days
St. Louis, MO – 18 Days	New York, NY – 29 Days
Memphis, TN – 16 Days	
New York, NY – 30 Days	

RAIL NETWORK in G3 & G4 Chicago, IL (Reference Map)



Off Dock Rail Ops Port LA/LB

In the past few weeks, a growing amount off dock (imports) rail cargo at our Port Terminals has been incurring rail dwells over 30+ days. Our Rail Ops Team is taking measures in working with the ICTF facility in Long Beach and Union Pacific Railroad to help expedite these rail imports as soon as possible. The most affected destinations are Salt Lake City (Ut), New Orleans (La), Denver (Co), Omaha (Ne), El Paso (Tx), and San Antonio (Tx) lacks cargo volume to build a dedicated ondock from the Port Terminal facilities.

We will provide more information and updates on this matter next week.

NEW EC6 SERVICE COMMENCE (Direct service from Asia to Gulf)

The vessel ONE Modern 056E has called Houston, Tx on June 13th, the next port of call is Mobile, Al 17th, and New Orleans on the 20th. Following vessel will be the ONE Matrix 061E call Houston, Tx July 9th. Following are the links to the schedule and the service shown below.

[Click Here for Service Maps](#)

[Click Here for Schedule](#)

ASIA – NORTH AMERICA | EC6: East Coast 6

Last update : 6-May-2021

For more information, please click [here](#)

PORT ROTATION (Terminals are subject to change)

ORIGIN	ETA/ETD	TERMINAL
Kaohsiung	SUN/SUN	Kao Ming Container Terminal (KMCT)
Hongkong	TUE/TUE	Hong Kong Seaport Alliance (HKSPA)
Yantian	WED/THU	Yantian International Container Terminal (YICT)
Ningbo	SAT/SUN	Ningbo Port Beilun Second Container Terminal (NBSC2T)
Shanghai	SUN/MON	SIPG Yangshan Phase IV
Pusan	TUE/WED	TBN
Houston	SAT/MON	Barbours Cut Terminal (BCT)
Mobile	TUE/WED	APMT
New Orleans	FRI/SAT	Napoleon Avenue Terminal
Kaohsiung	SUN/SUN	Kao Ming Container Terminal (KMCT)
Turnaround days:	70	

KEY TRANSIT TABLE - UNLOCODE PORT NAME & COUNTRY NAME

	TPWB	KHH	HKG	YTN	NGB	YSA	PUS
KHH	34	37	40				
HKG	32	35	38				
YTN	30	33	36				
NGB	27	30	33				
YSA	26	29	32				
PUS	24	27	30				

NOTE: Transit times and port rotation are as of now and subject to change

General Update on Port Congestion in Asia

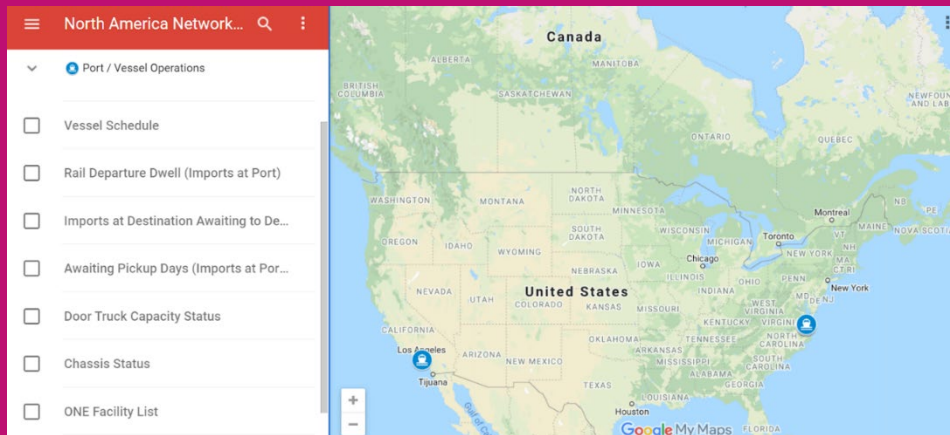
- **PUS** – Yard expected to be around 90% and delay will be expected. Estimated 2 days and above waiting to discharge.
- **TAO** – No waiting time reported.
- **NGB** – Waiting time 2-3 days. Productivity will be affected due to tighter quarantine inspection.
- **SHA (WGQ)** – Waiting time 1 – 2 days.
- **SHA (YAN)** – Waiting time 1 to 2 days.
- **XMN** – Half day waiting due to tighter quarantine inspection.
- **SHK** – Waiting time 3 days.
- **YTN** – Waiting time 1 day.
- **HKG** – Yard capacity at 95%. Discharge waiting 8 days or more. Loading 2 days or more.

ONE's North America Resources

With your ONE eCommerce Login you have access to ONE's North America Network Map and Port Gate Calendar which contain detailed information like Vessel Schedules, Rail Departure Dwell, Door Truck Capacity, Chassis Status and much more.

Please note – The image and message will remain the same but data is updated three times per week.

[Click Here for the North America Network Map](#)



[Click Here for the ONE Gate Calendar](#)

ONE Partner Facilities Gate Calendar						
Today	May 2021		Print	Week	Month	Agenda
Sun	Mon	Tue	Wed	Thu	Fri	Sat
TRAPAC LAX Open					APMT & WBCT also open 2nd shift	APMT, ITS & TRAPAC LAX OPEN
TRAPAC LAX Open				2nd shift LA/LD Monthly stop	APMT, WBCT & Trapac LAX also	ITS, WBCT & TRAPAC LAX OPEN
TRAPAC LAX Open					APMT, WBCT & Trapac LAX also Husky Closed	ITS, WBCT & TRAPAC LAX OPEN
TRAPAC LAX Open				8pm Oakland Stop Work Mtg 2nd	APMT, WBCT & Trapac LAX also	WBCT & Trapac LAX Open
Trapac LAX Open	ONE-LINE FACILITY HOLIDAY			YTI closed 2nd shift	APMT, WBCT & Trapac LAX also	WBCT, ITS & Trapac LAX Open
	ONE-LINE FACILITY HOLIDAY				APMT also open 2nd shift	

Thank you for choosing Ocean Network Express (North America), Inc.