

ONE View – North America Customer Newsletter

June 25th, 2021



General Overview

The overall general information remains the same for North America Operations this week (high record volumes that continue to strain Truck Capacity, Chassis, and Rail Car Availability). We strongly encourage appointments to be made a few days earlier than normal at the terminals to have imports picked up (it helps keep terminals running fluid) and return your empties as soon as possible, making more chassis available. July 4th Holiday weekend is two weeks away. As a reminder, most facilities will be closed on **Sunday the 4th of July**. However, **Monday, July 5th is ILWU's** (International Longshore & Warehouse Union) "**Bloody Thursday**", all Terminals on the West Coast will be completely closed. Please help minimize any disruption that may follow the 4th and 5th of July and weeks ahead.

Terminal Conditions for USA/CANADA

- **Pacific North West** – Seattle T18, **11 days** rail dwell time average. Husky Terminal, **8 days** rail dwell average. WUT Terminal, **6 days** rail dwell average. Vancouver and Prince Ruppert Terminals remain stable and not experiencing any huge congestion issues at this time.
- **Port of Oakland** – OCIT and Trapac both terminals averaging **4 days** rail dwell time. However, there are 24 ships waiting to berth, which is forcing terminals carefully meter the discharge of imports. This week Oakland has been encountering more skilled labor shortage, which may increase during **July 4th and 5th Holidays**.
- **Port of Los Angeles/Long Beach** – LA/LB is at 9 vessels waiting. However, there's still a huge volume of imports to be moved out. All terminals are averaging **12-17 days** of rail dwell.
- **East Coast** - GCT-BAYONNE (New Jersey), MAHER (New York), GPA (Savannah), NIT/VIG (Norfolk), and SCPA (Charleston) terminals are facing huge turn times of 1 to 2 hours because of record volume cargo that's putting a strain on Truck capacity and Chassis. As of this week, it's been reported that there are 8 vessels waiting for berth.

RAIL NETWORK in G3 & G4 Chicago, IL

ONE has been closely coordinating with UPRR and Rail OPS, developing a plan to run dedicated trains from Tacoma and Long Beach into G3 Rail Facility (40's only) to immediately deck and run the empty well cars to G4 Rail Facility to load exports back to Tacoma and Long Beach.

This will:

- Increase the velocity of rail cars back to Ocean terminals for the potential avoidance of increased rail dwell.
- This will limit the strain on chassis by decking 100% of imports at G3 Rail Facility.
- Imports that are being shuttered to G4 (from G3) will be unloaded on chassis.
- Potential avoidance rail storage at G4 Rail Facility.

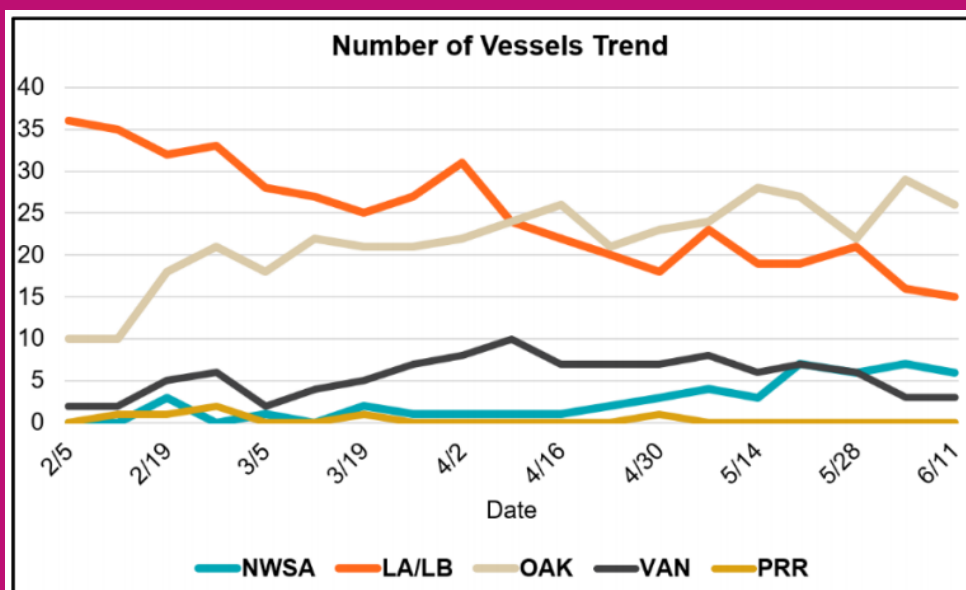
RAIL NETWORK in G3 & G4 Chicago, IL (Reference Map)



Average Rail Transit Times (May 2021)

From Los Angeles/Long Beach	From Seattle/Tacoma/Vancouver
Atlanta, GA – 20 Days	Atlanta, GA – 18 Days
Chicago, IL – 18 Days	Chicago, IL – 20 Days
Cleveland, OH – 18 Days	Cleveland, OH – 15 Days
Columbus, OH – 19 Days	Columbus, OH – 15 Days
Dallas, TX – 17 Days	Detroit, MI – 12 Days
Detroit, MI – 15 Days	Kansas City, KS – 14 Days
Houston, TX – 18 Days	St. Louis, MO – 14 Days
Kansas City, KS – 17 Days	Memphis, TN – 12 Days
St. Louis, MO – 19 Days	New York, NY – 28 Days
Memphis, TN – 15 Days	
New York, NY – 30 Days	

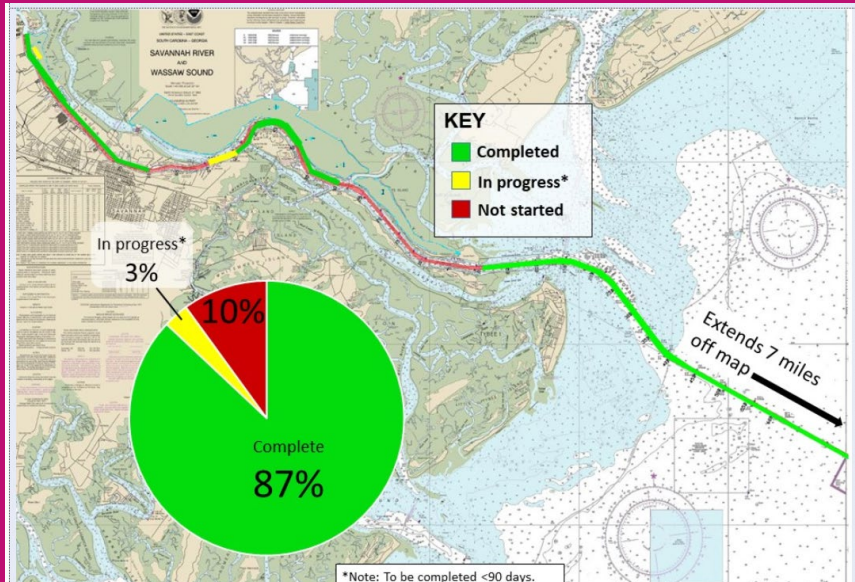
Anchor and Berth Trends West Coast



Anchor and Berth at Select Ports

Port Location	Total Vessels (all Lines)	Days Waiting
Los Angeles/Long Beach, CA	9	0-2 days
Oakland, CA	24	8-20 days
Seattle/Tacoma, WA	5	3-6 days
Vancouver, BC (Canada)	5	0-4 days
Savannah, GA	8	0-2 days

Dredging project temporarily slows vessel activity at Port of Savannah, harbor deepening moves to berth areas, adding to wait time.



NEW EC6 SERVICE COMMENCE (Direct service from Asia to Gulf)

The vessel ONE Modern 056E has called Houston, Tx on June 13th, the next port of call is Mobile, Al 17th, and New Orleans on the 20th. Following vessel will be the ONE Matrix 061E call Houston, Tx July 9th. Following are the links to the schedule and the service shown below.

[Click Here for Service Maps](#)

[Click Here for Schedule](#)

ASIA – NORTH AMERICA | EC6: East Coast 6

Last update : 6-May-2021

For more information, please click [here](#)

EASTBOUND →

WESTBOUND ←

PORT ROTATION (Terminals are subject to change)

ORIGIN	ETA/ETD	TERMINAL
Kaohsiung	SUN/SUN	Kao Ming Container Terminal (KMCT)
Hongkong	TUE/TUE	Hong Kong Seaport Alliance (HKSPA)
Yantian	WED/THU	Yantian International Container Terminal (YICT)
Ningbo	SAT/SUN	Ningbo Port Beilun Second Container Terminal (NBSC2)
Shanghai	SUN/MON	SIPG Yangshan Phase IV
Pusan	TUE/WED	TBN
Houston	SAT/MON	Barbours Cut Terminal (BCT)
Mobile	TUE/WED	APMT
New Orleans	FRI/SAT	Napoleon Avenue Terminal
Kaohsiung	SUN/SUN	Kao Ming Container Terminal (KMCT)
Turnaround days:	70	

TPWB	HOU	MOB	MSY	TPWB	KHH	HKG	YTN	NGB	YSA	PUS
KHH	34	37	40	HOU	34	36	37	40	41	43
HKG	32	35	38	MOB	32	34	35	38	39	41
YTN	30	33	36	MSY	29	31	32	35	36	38
NGB	27	30	33							
YSA	26	29	32							
PUS	24	27	30							

KEY TRANSIT TABLE - UNLOCODE PORT NAME & COUNTRY NAME

KHH: Kaohsiung, Taiwan | HKG: Hongkong, China | YTN: Yantian, China | NGB: Ningbo, China | YSA: Yangshan, China | PUS: Pusan, Korea | HOU: Houston, USA | MOB: Mobile, USA | MSY: New Orleans, USA

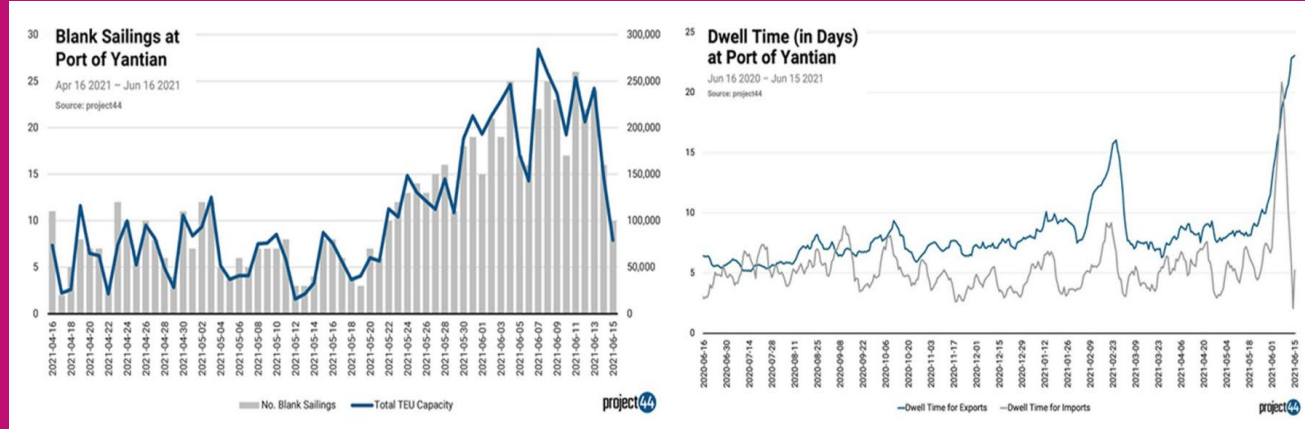
NOTE: Transit times and port rotation are as of now and subject to change

Yantian Disruption Update

The situation at Yantian continues to improve. Port is expecting full terminal/berth capacity by this week. The labor has recovered 60-70% of normal. There is optimism that the situation will continue to improve this month.

Key points

1. Total vessels waiting – 5 vessels expecting to be cleared up soon.
2. Vessels to load waiting – 2 to 3 days
3. Yard Utilization - 56%

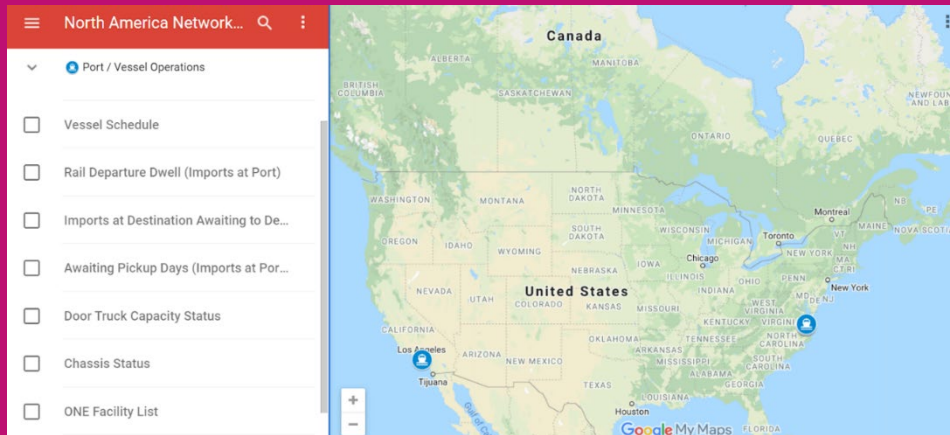


ONE's North America Resources

With your ONE eCommerce Login you have access to ONE's North America Network Map and Port Gate Calendar which contain detailed information like Vessel Schedules, Rail Departure Dwell, Door Truck Capacity, Chassis Status and much more.

Please note – The image and message will remain the same but data is updated three times per week.

[Click Here for the North America Network Map](#)



[Click Here for the ONE Gate Calendar](#)

ONE Partner Facilities Gate Calendar						
Today ← → May 2021 Print Week Month Agenda						
Sun	Mon	Tue	Wed	Thu	Fri	Sat
TRAPAC LAX Open					APMT & WBCT also open 2nd shift	APMT, ITS & TRAPAC LAX OPEN
TRAPAC LAX Open				2nd shift LA/LD Monthly stop	APMT, WBCT & Trapac LAX also	ITS, WBCT & TRAPAC LAX OPEN
TRAPAC LAX Open					APMT, WBCT & Trapac LAX also	ITS, WBCT & TRAPAC LAX OPEN
TRAPAC LAX Open					Husky Closed	
TRAPAC LAX Open				8pm Oakland Stop Work Mtg 2nd	APMT, WBCT & Trapac LAX also	WBCT & Trapac LAX Open
Trapac LAX Open	ONE-LINE FACILITY HOLIDAY			YTI closed 2nd shift	APMT, WBCT & Trapac LAX also	WBCT, ITS & Trapac LAX Open
	ONE-LINE FACILITY HOLIDAY				APMT also open 2nd shift	

Thank you for choosing Ocean Network Express (North America), Inc.